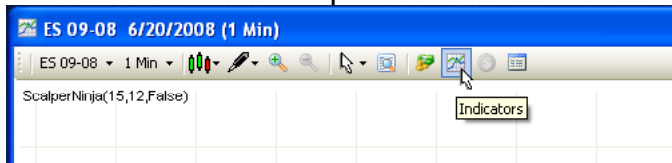


Scalper Pivot Point Troubleshooting Addendum for Ninja Trader

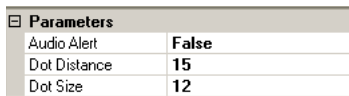
After adding Scalper Pivot Points to my chart, no Audio Alerts are heard.

By default, alerts are not turned on. Follow these steps to enable alerts.

1. Open the **Indicators** dialog box by clicking on **Indicators** in the top menu as illustrated below.



2. Go to **Parameters** and change **Audio Alert** to **True**.



3. Click **Apply** then **Close**.

At times several consecutive Scalper Pivot Point indicators are shown on my chart. How do I know when to enter and / or exit a trade?

Please remember that Scalper is a indicator and NOT a trading system. Do not use the indicator as the only indicator to enter or exit a position. It is to be used as a confirmation of reversals to your present method of trading.

Scalper signals come on the first tick of the bar when **Calculate on bar close** is set to **False**, set to **True** the Scalper signal will display at the completion of the bar, S&P ScalperNinja works on realtime data for its reversal signals. Our default is set to **True** to Calculate on bar close for better signals.

General	
Auto scale	False
Calculate on bar close	True
Displacement	0
Display in Data Box	True
Label	ScalperNinja
Panel	1
Price marker(s)	True
Plots	
Signal	Dot; Solid; 1px

Scalper Pivot Point software works best on “choppy” search and destroy days. Watch out for strong trend days that tend to give reversal signals only to continue the trend.

News pending days like FOMC and the day before holiday eve and transition days...ScalperNinja will not perform as normal trading days.

Create a new workstation with a 2, 3, 4, 5, 6, 7, 8, 9 Range chart of ES or whatever symbol you’re going to trade.

Look at the GlobeX charts about an hour back before NY open. See what 2 charts are in sync with the tempo and rhythm, of the market for Scalper reversal signals.

We then follow and trade off these charts until we see a change in the trend on the other time frames.

We use the YM as a guide to the major trend of the market.

Loading key Indices will help in confirming a reversal.

It is suggested to run the main chart you make your trade decision on with only the Audio Alert ON, if you must have Audio Alerts active.